



ANNUAL REPORT

20

A YEAR OF
GROWTH & RESILIENCE

23



A Future Powered by Community



As President of the Southbridge Community Development Corporation Board, I am excited to share the progress we are making this year, particularly in our beautification and revitalization efforts. At this, my first annual meeting, we celebrate our primary focus: the beautification of housing. This initiative demonstrates our commitment to honoring our community's rich legacy and heritage, strengthening organizational infrastructure, and empowering new leaders.

We are dedicated to uplifting residents who have lived for decades without significant enhancements to their homes. This commitment underscores our mission to renew our land, labor, and capital, aiming to enhance public spaces, improve infrastructure, and create economic opportunities that empower residents and businesses. Our transformative journey is about building capacity, fostering community pride, and encouraging active participation from our community.

We are witnessing remarkable progress, ensuring that SouthBridge thrives for generations to come with innovative growth and prosperity. **SouthBridge Connects: "A Future Powered By Community."**

Travis Smith, Sr.

Travis Smith, Sr.
Board President



As (interim) Executive Director of the Southbridge Community Development Corporation, supported by our dedicated staff person Ayodele (Dele) Johnson, we undertook and embraced the significant challenge of increasing our organization's capacity. Together, we laid a solid foundation to strengthen our board of directors, establish effective working committees (SNAP), and employ talented staff (Kenyon Wilson). Our board and team now possess the knowledge, skills, and passion essential to address the community's needs.

I extend my heartfelt gratitude to each board member and staff for their unwavering commitment and hard work on behalf of the Southbridge community which I have been a resident for 46 years. Your contributions are vital to our mission, and together we will continue to build Southbridge. **Southbridge Connects: "A Future Powered by Community."**

Hanifa Shabazz

Dr. Hanifa Shabazz
(Interim) Executive Director

To Create & Support Ownership of Land, Labor & Capital in the
Southbridge Community



In 2021, the former Neighborhood House Community Development Corporation’s name was changed to Southbridge Community Development Corporation. it was reenergized in 2021 with funding from Healthy Communities Delaware to be the backbone organization required for the implementation of the Southbridge Neighborhood Action Plan.

The SBCDC objectives are:

COMMUNITY EMPOWERMENT

Southbridge CDC empowers the community by actively involving residents and organizational principals in leadership and community service, ensuring a shared sense of ownership and impact.

LOCAL OWNERSHIP

Southbridge CDC is committed to creating local ownership of land, labor and capital, highlighting Southbridge Connects’ dedication to self-sustained growth within the community.

HOLISTIC WELL-BEING

Southbridge CDC takes a comprehensive approach to well-being, focusing on health, housing, life sustaining work, reliable transportation, lifelong learning, and community unity and advocacy.

“When I dare to be powerful, to use my strength in the service of my vision, then it becomes less and less important whether I am afraid.”

Audre Lorde

An African American writer and poet

Uniting Talents, Fueling Innovation

SBCDC Board of Directors



Meet our dedicated team of professionals who have contributed their expertise, passion, and collaboration to drive our success.



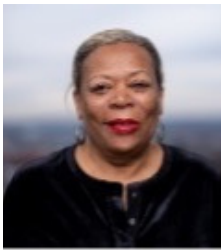
Travis Smith, Sr.
President



John Polk
Treasurer



Wesley Schwandt
Secretary



Jocelyn Harper
Assistant Secretary



Larretta Wilson
Assistant Treasurer



Richard L. Dyton
Project Manager



Keith Williams
Housing Chair



Dr. Samira Savoury
Housing/Workforce



Leslie A. Nutter
Communications



Danielle Brothers
Workforce



Carolyn Markland
Communications

SBCDC Staff



Dr. Hanifa Shabazz
Interim Executive Director

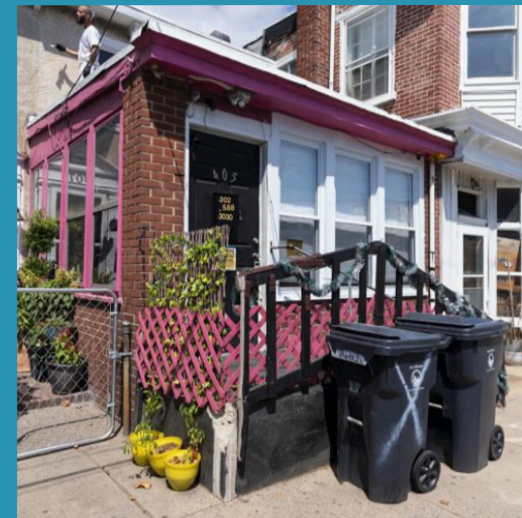


Ayodele Johnson
Admin Coordinator



Kenyon Wilson
Community Liason

Solid Growth, *sustainable prosperity*



Omega Landscaping



SOUTHBRIDGE NEIGHBORHOOD ACTION PLAN-(SNAP)

Southbridge Community Development Corporation, with the support of Healthy Communities Delaware, and on behalf of the Southbridge Civic Association, developed sub-committees to implement the various SNAP categories which include the following:

- Community Empowerment
- Economic Revitalization
- Youth and Education
- Affordable Living
- Better Health
- Improved Mobility
- Resilience to Climate Change

SBCDC, in the furtherance of the SNAP, provided organizational structure and capacity development to the Southbridge Civic Association. The Southbridge Civic Association, has undergone several changes in its leadership which was necessary to drive the community engagement required to implement the SNAP. The SBCDC proposes to use the catalyst *Southbridge Connects* to link community partners and stakeholders to ensure a future empowered by the community.

ARPA SLFRF FAÇADE BEAUTIFICATION

50 owner-occupied homes were the subject of the façade beautification program. Currently, 25 homes have been completed and the remaining 25 homes are slated to receive façade beautification and landscaping improvements during summer 2024.

Upcoming:

- beautification landscaping with youth maintenance teams
- 2nd homeowner financial literacy workshop
- home repair workshops
- minority contractors project management & administrative skills workshops

Energize Delaware

The SBCDC is recruiting residents for 2-employment positions as Community Energy Ambassadors. The Ambassadors will play a crucial role in identifying and assisting residents in determining the energy assistance programs and services for which they may be eligible.

Roofs From the Heart

Collaborated to repair ten homeowners' roofs, two completed with three home repair in progress and the remaining five homes to be scheduled for repair.

SANKOFA PLACE

In partnership with Habitat for Humanity (NCC) and funded by ARPA City of Wilmington, we encouraged Southbridge rental residents to participate and complete (HFHNCC's) program certification to qualify for one of the five to be constructed townhomes.

Confirmation of the awarded homeowners are to be determined with construction ground breaking to begin in the 3rd quarter of 2024.



Statements of Financial Position & Activity

Southbridge Community Development Corporation

Statement of Activity
January - May, 2024

	TOTAL
Revenue	
Contributed income	
Government grants & contracts	100,000.00
Total Contributed Income	100,000.00
Total Revenue	\$100,000.00
GROSS PROFIT	\$100,000.00
Expenditures	
Accounting & Legal Fees	
Accounting fees	2,618.05
Total Accounting & Legal Fees	2,618.05
Admin Expenses	
Admin Coordinator	20,604.40
Community Liaison	9,041.66
Contractors	
Fund Developer	0.00
HQNS Consulting	21,666.68
Total Contractors	21,666.68
Marketing & Events	1,348.14
Total Admin Expenses	\$2,660.88
Equipment/Supplies/Subscriptions	3,926.37
Hard Construction	
Beautification-Bid Totals	91,533.12
Total Hard Construction	\$1,533.12
Insurance	
Liability insurance	880.00
Total Insurance	880.00
Office expenses	
Bank fees & service charges	940.01
Total Office expenses	940.01
Payroll expenses	
Payroll Processing Fees	612.00
Payroll Taxes	2,028.84
Salaries & wages	0.00
Total Payroll expenses	2,640.84
Total Expenditures	\$155,198.27
NET OPERATING REVENUE	\$-55,198.27
NET REVENUE	\$-55,198.27

Accrual Basis: Friday, June 21, 2024 10:15 AM GMT-04:00

1/1

Southbridge Community Development Corporation

Statement of Financial Position
As of May 31, 2024

	TOTAL
ASSETS	
Current Assets	
Bank Accounts	
Non-Restricted-Southbridge CDC Operations (5734)	111,041.89
Restricted-APRA (State) (5419)	283,515.89
SB CDC RESERVE CAPITAL ACCT (6075) - 3	20,802.51
Total Bank Accounts	\$415,360.29
Total Current Assets	\$415,360.29
TOTAL ASSETS	\$415,360.29
LIABILITIES AND EQUITY	
Liabilities	
Current Liabilities	
Accounts Payable	
Accounts Payable (A/P)	46,974.00
Total Accounts Payable	\$46,974.00
Credit Cards	
PNC Master (1460)	1,898.31
Total Credit Cards	\$1,898.31
Other Current Liabilities	
State/Local Income Tax Payable	331.54
Total Other Current Liabilities	\$331.54
Total Current Liabilities	\$49,203.85
Total Liabilities	\$49,203.85
Equity	
Retained Earnings	421,355.71
Net Revenue	-55,198.27
Total Equity	\$366,156.44
TOTAL LIABILITIES AND EQUITY	\$415,360.29

Accrual Basis: Friday, June 21, 2024 10:15 AM GMT-04:00

1/1

*Unaudited

Gratitude, Collaboration, and Continued Success



Sponsors & Partners

